

The NIH Submission & Review Process

Amy Goldstein, PhD

National Institute of Mental Health

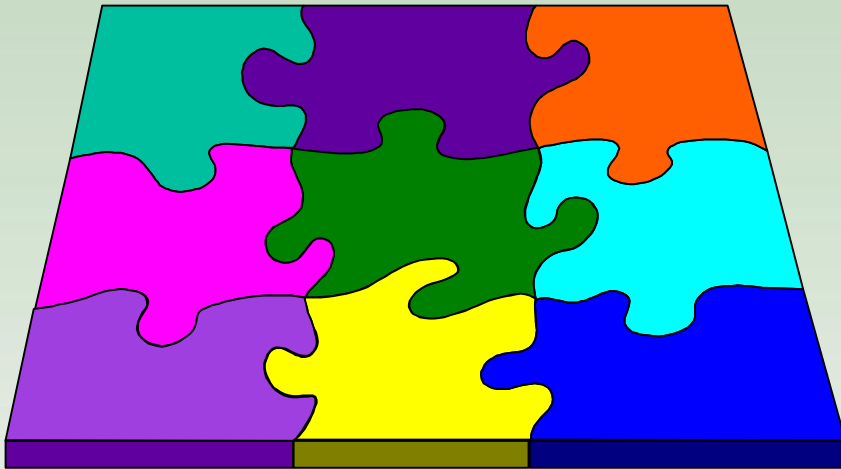


NIMH
National Institute
of Mental Health

Presented at the 2009 CHIPS Summer Research Institute in Tempe, AZ



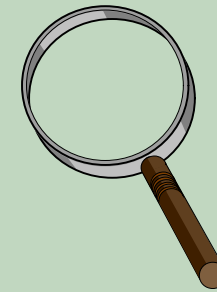
NIMH is part of NIH



- NIH is part of U.S. Department of Health and Human Services
- NIH is comprised of 27 Institutes and Centers
- Similar in some ways, but not all



What's NIH?



- National Cancer Institute
- National Eye Institute
- National Heart, Lung, and Blood Inst.
- National Human Genome Research Inst
- National Institute on Aging
- National Institute on Alcohol Abuse and Alcoholism
- National Institute of Allergy and Infectious Diseases
- National Institute of Arthritis and Musculoskeletal and Skin Diseases
- National Institute of Child Health and Human Development
- National Institute on Deafness and Other Communication Disorders
- John E. Fogarty International Center

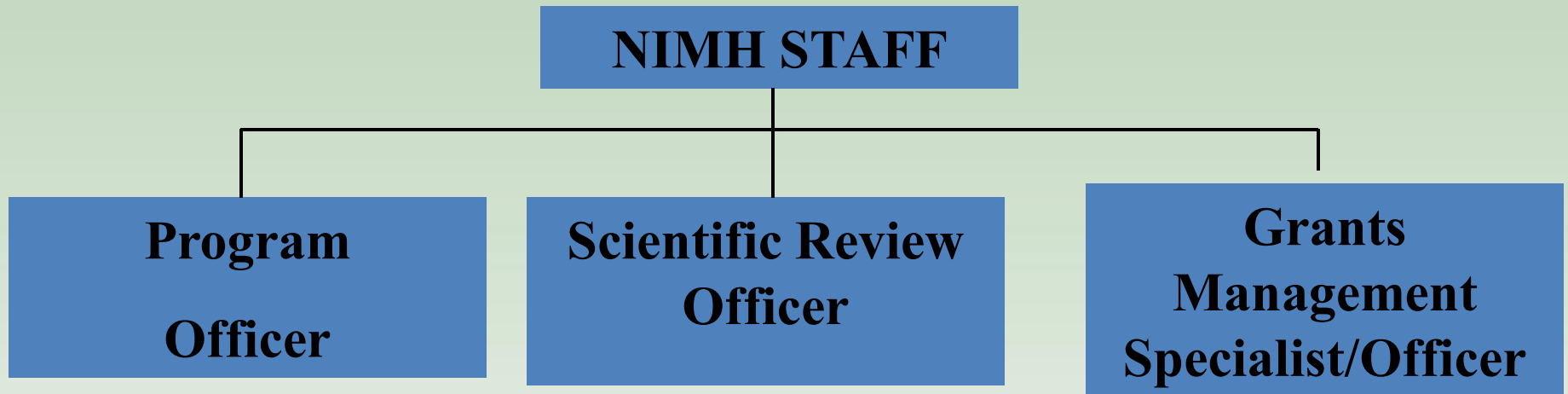


[Center for Scientific Review](#)

- National Institute of Dental and Craniofacial Research
- National Institute of Diabetes and Digestive and Kidney Diseases
- National Institute on Drug Abuse
- National Institute of Environmental Health Sciences
- [National Institute of Mental Health](#)
- National Institute of Neurological Disorders and Stroke
- National Institute of Nursing Research
- National Library of Medicine
- Warren Grant Magnuson Clinical Center
- Center for Information Technology
- National Center for Complementary and Alternative Medicine
- National Center for Research Resources

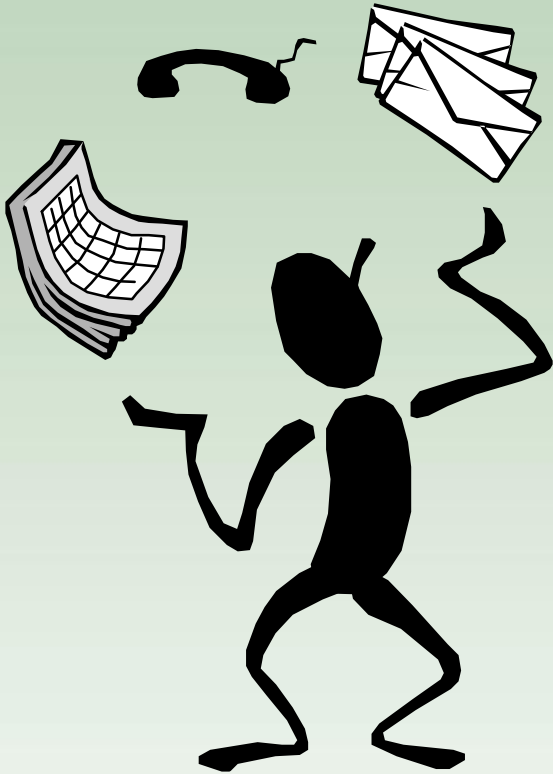


Who?

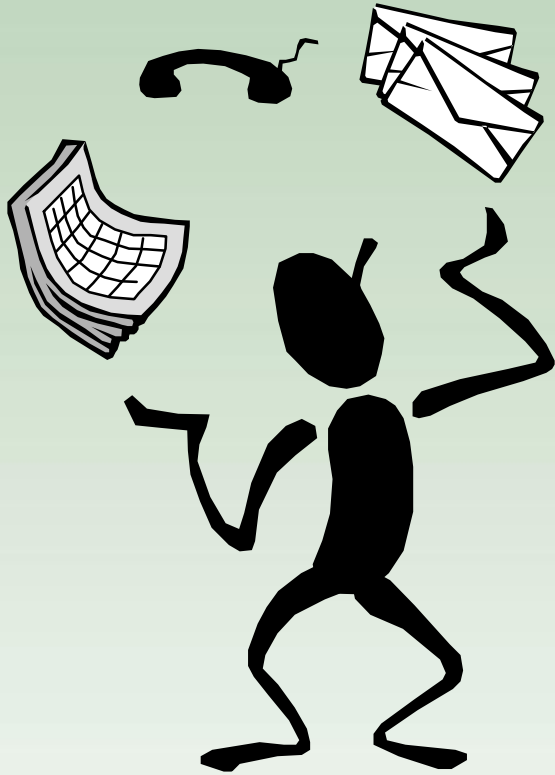


Who/What is a Program Officer?

- Program Officer
 - is a scientist and administrator
 - manages the review of grants, contracts, cooperative agreements
 - appoints members to initial review groups/study sections/special emphasis panels
 - responds to questions about review at advisory councils and board meetings
 - prepares summary statements reflecting IRG recommendations



Who/What is a Scientific Review Officer?

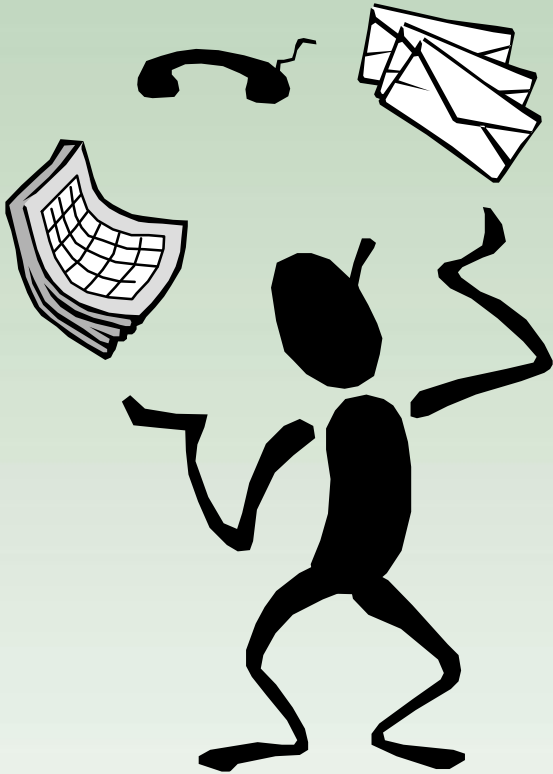


- Scientific Review Administrator
 - is a scientist and administrator
 - manages grants, contracts, cooperative agreements
 - identifies needs in scientific areas
 - identifies scientific areas of special interest and communicates interest
 - monitors research progress
 - *advocates for the best science*



Who/What is a Grants Management Officer?

- Grants Management Officer
 - implements the funding process
 - watches over the budget
 - ensures compliance of grantee with Institute policies and regulations



Who Should I Talk to, About What and When?

- Program staff
 - scientific & programmatic issues/concerns
 - before submitting application
 - after review meeting
 - NOT in between



Who Should I Talk to, About What and When?

- Scientific Review Officer
 - after application assigned to review committee, until scores are released
 - change of review committee
 - change of mechanism or application number
 - missing information
 - supplemental information
 - any other review related issues

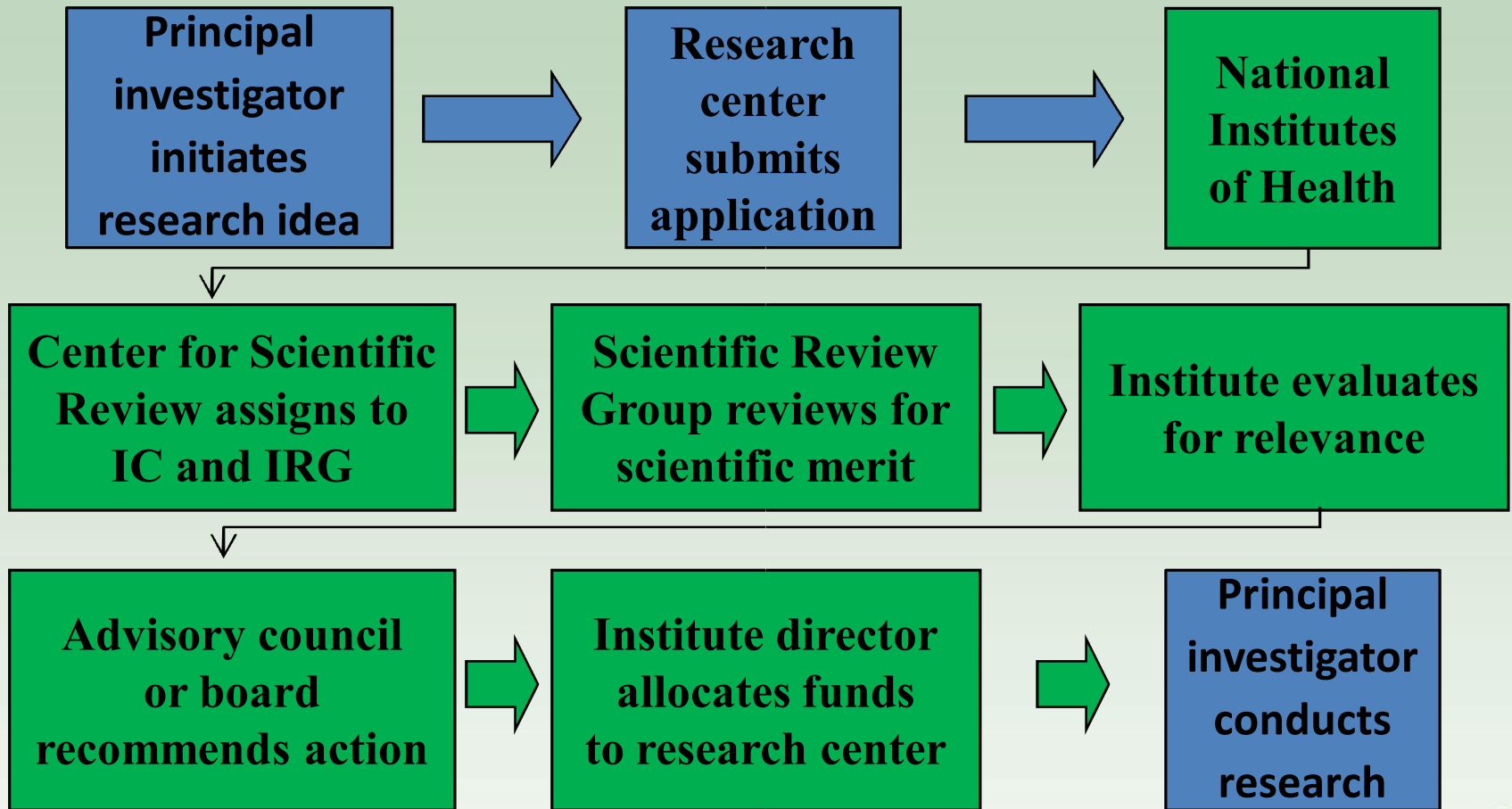


Who Should I Talk to, About What and When?

- Grants Management Specialist
 - questions about NIH grants policy
 - budgetary questions
 - change of institutions
 - grant start dates



Submission/Review Process for a Research Grant



NIH Electronic Submission

- Grants.gov
 - Single portal for all applications to all federal agencies
- eRA Commons
 - NIH electronic research administration system
 - <http://era.nih.gov/ElectronicReceipt/>
- Registration required in advance (may take 4 weeks)





NIH Office of Extramural Research

Electronic Submission of Grant Applications

[OER Home](#)

Search:



[Advanced Search](#)

[Home](#)

[Electronic Application Process](#)

[Transition Timeline](#)

[Avoiding Common Errors](#)

[Frequently Asked Questions \(FAQs\)](#)

[Training](#)

[Resources](#)

[Finding Help](#)

[Site Map](#)

[eRA Commons](#)

[Intranet Link \(NIH Staff only\)](#)

Electronic Submission

Paper No More, Use 424 (R&R)

[Subscribe to the latest eSubmission News!](#)

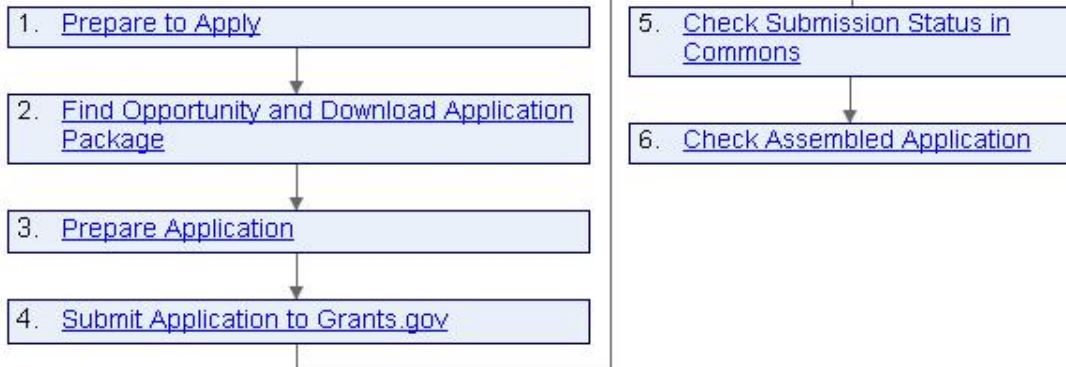


All R01 Grant Applications Are Now Electronic

[Resubmission, Revision, Renewal FAQs](#) **NEW**

Electronic Application Process

[View Process Flow Chart \(PDF, 23.1KB\)](#)



Transition Timeline

- [Timeline \(Graphic format\)](#)
- [More...](#)

Avoiding Common Errors

Latest Updates

New Postings

[Tips for the Principal Investigator \(PDF, 55.4KB\)](#)

- [Updated SF424 \(R&R\) Validations posted \(April 13, 2007\)](#)
- [Automated training demos posted \(Jan. 26, 2007\)](#)
- [File Size FAQs posted \(Jan. 22, 2007\)](#)
- [Flow chart of Grants.gov registration process \(PDF, 24.4KB\) \(Jan. 3, 2007\)](#)
- [Dec. 5 Training Videocast & Podcast available \(Dec. 5, 2006\)](#)

[More...](#)

Alerts

- [Resubmission, Revision, Renewal FAQs](#) **NEW**
- [Options for Mac Users:](#) **NEW**

Peer Review Changes Happening NOW

- January 2009 (and beyond) Due Dates
- Potential FY2010 funding
 - New Policy on Resubmissions
 - Identification of Early Stage Investigator Applications



Goals of New Resubmission Policy

- Fund meritorious science earlier
- Enhance success rates of new and resubmitted applications by decreasing the number of allowed grant application resubmissions (amendments) from two to one



New Policy on Resubmissions

- For January 25, 2009 due dates and beyond, NIH will accept only a single amendment to the original application
 - original new applications (i.e., never submitted)
 - competing renewal applications



Early Stage Investigator (ESI) Policy

- NIH will support New Investigators (NIs) at success rates comparable to those for established investigators submitting new apps
- ESIs will comprise a majority of the NIs supported (FY 2009 funding and beyond)
- To ensure appropriate consideration for ESI eligibility, all NIs will need to update their eRA Commons profiles, and will now see their eligibility displayed in eRA Commons



Goals of Identifying Early Stage Investigators

- Encourage transition to independence for investigators
- Counter trend of increasing time spent in training phase of career
- Strongly encourage New Investigators, particularly ESIs, to apply for R01 grants when seeking first-time NIH funding



Early Stage Investigator Implementation

- Beginning with the traditional R01 grant applications received for the February 5, 2009 receipt dates, NIH will identify grant applications from NIs and ESIs
- NI and ESI applications will be clustered for review beginning with the May 2009 review meetings



What Constitutes an Early Stage Investigator?

- Within 10 years of completing terminal research degree, medical residency, or equivalent
- Have not successfully competed for NIH-supported funding other than for these mechanisms:
 - R00, R03, R15, R21, R34, R36, R41, R43, R55, R56, SC2, SC3, F awards, K awards, L30, L32, L40, L50, L60, G07, G08, G11, G13, G20, S10, S15, S21, S22



Enhancing Peer Review at NIH



<http://enhancing-peer-review.nih.gov>

- Latest Status
- Timelines
- Related Policy Changes
- Frequently Asked Questions
- Training and Communication Resources



Study Section Organization

Standing Study Section (IRG)

- Meets 3 times/ year
- 16-24+ Standing Study Section Members (one member Chairs; ad hocs as needed)
- Standing Study Sections review ~60-100 applications

Special Emphasis Panel (SEP)

- Meets ad hoc; sometimes by teleconference
- Number of Members PRN (one member Chairs)
- Number of applications varies (1+)
- Typically review RFAs, PAs, special mechanisms, conflicts



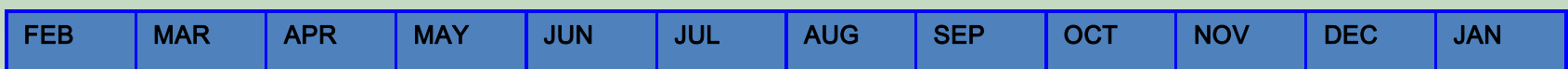
How are funding decisions made?

- Peer Review → Priority Score
- Program Review/Recommendation
- National Mental Health Advisory Council Review
- Director's discretion and budget considerations

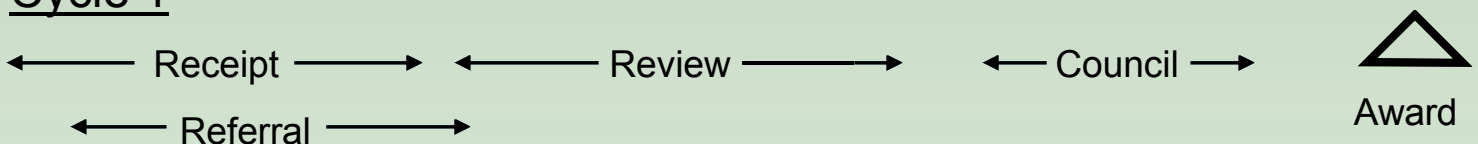


Be patient – It's a long process

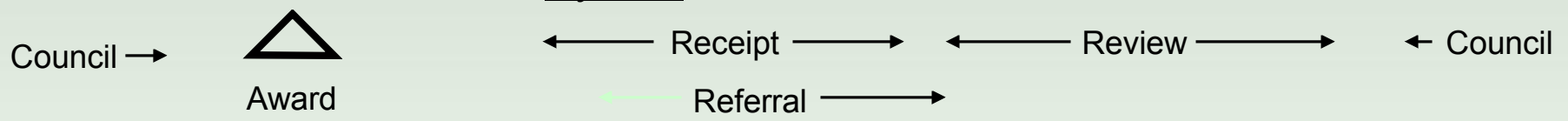
- There are three overlapping cycles per year:



Cycle 1



Cycle 2



Cycle 3



Where Should My Application Go?

- Center for Scientific Review panels
- NIMH panels
- Psychosocial Development and Risk Review panel
 - See applications from NIMH, NICHD, NIDA



Audience Question

- Where should an application for an announcement that is cosponsored by multiple institutions go?



Dissemination and networking
services brought to you by



interlinkTM
training dissemination services

interlink*your* **training**.com