

NIMH Division of Services & Intervention Research, Current Research Priorities, and Selected Funding Mechanisms

Joel Sherrill, PhD

National Institute of Mental Health



Presented at the 2009 CHIPS Summer Research Institute in Tempe, AZ

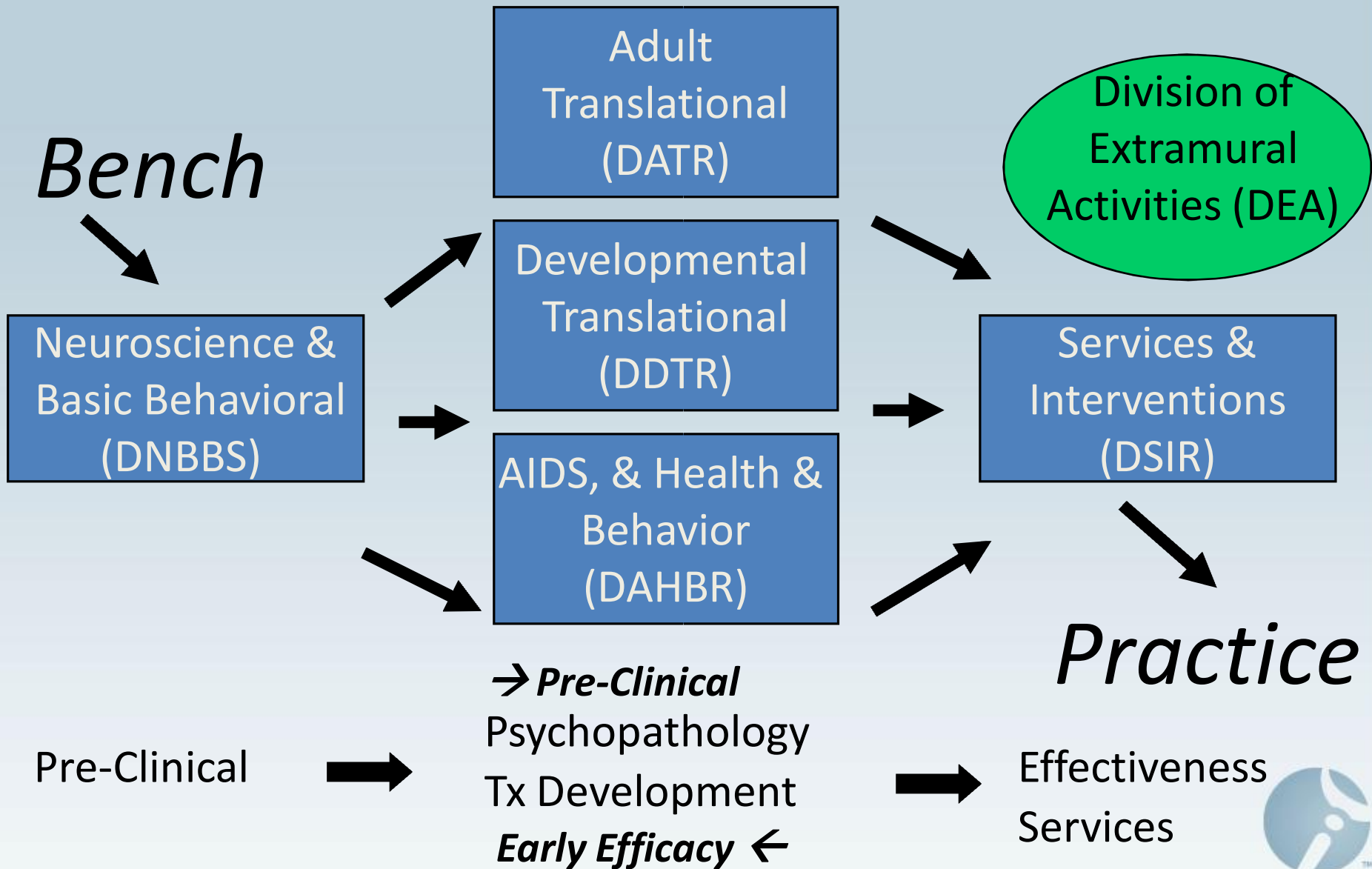


Overview of NIMH/DSIR

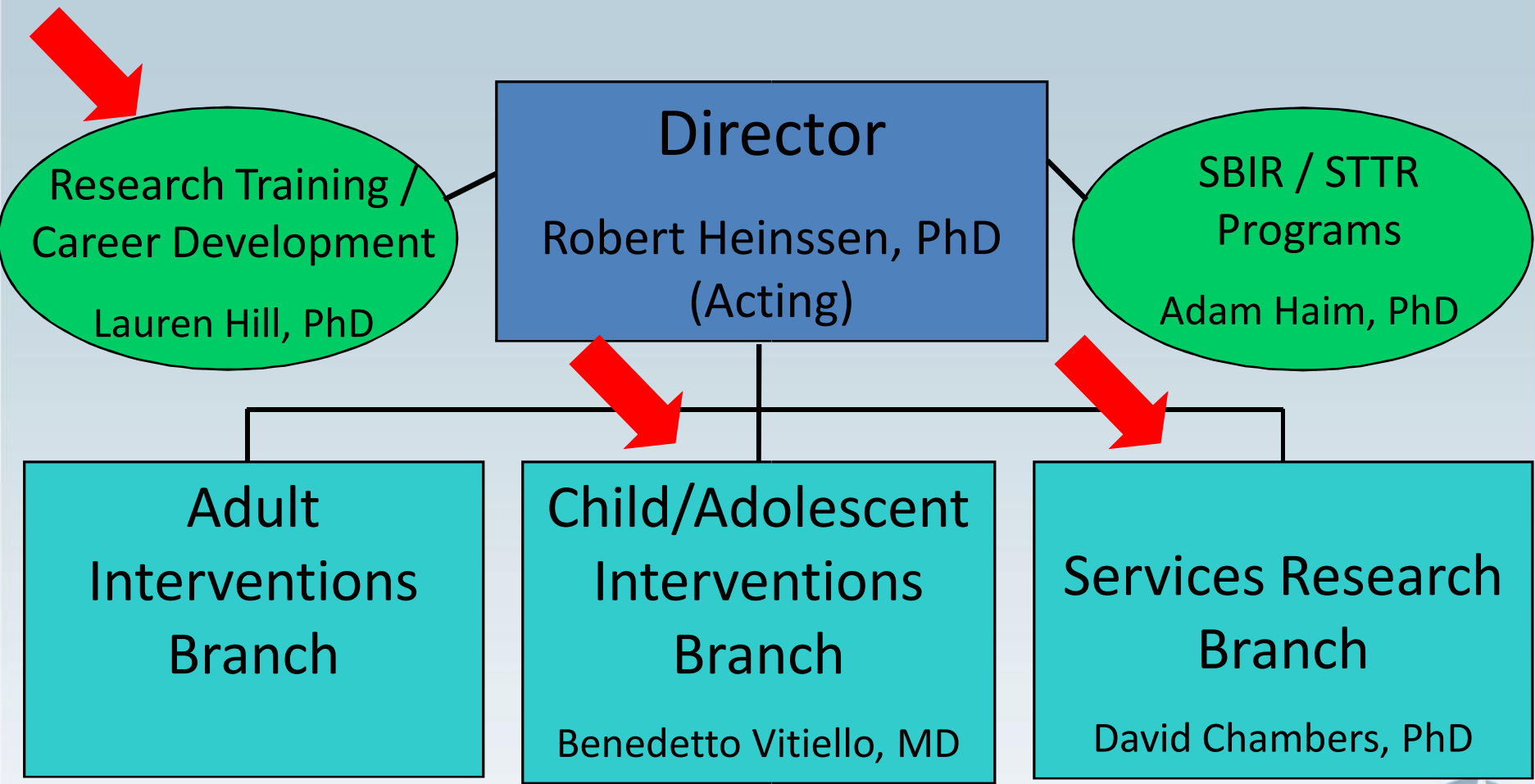
- NIMH Extramural Program Division Structure
- Division of Services & Intervention Research (DSIR)
 - Structure / Research Branches
 - Child-related Research in DSIR
 - Program Contacts



NIMH Extramural Division Structure



DSIR Structure



Child/Adolescent Research in the DSIR

- DSIR supports two areas of Child & Adolescent Research and Training:
 - Child & Adolescent Treatment & Preventive Intervention Research (effectiveness of pharmacologic, psychosocial, somatic, rehabilitative and combination interventions on mental and behavioral disorders).
 - Child & Adolescent MH Services Research (e.g., clinical epidemiology, implemental/dissemination research, MH economics, quality of care)



Research Programs/Contacts

- Child/Adolescent Treatment & Preventive Interventions Research Branch (CATPIRB)
 - Benedetto Vitiello, M.D.
 - Pharmacological & Combined Interventions
 - Amy Goldstein, Ph.D.
 - Preventive Interventions
 - Joel Sherrill, Ph.D.
 - Psychosocial Treatment Interventions



Research Programs in the Services Research & Clinical Epidemiology Branch

- 
- Child & Adolescent
 - Primary Care
 - Quality of Care
 - Financing & Managed Care
 - Systems Research
 - Health Disparities
 - Research Methods
 - Clinical Epidemiology
 - Dissemination and Implementation Research



Research Priorities



Sources of Information Regarding Research Priorities

- I. Institute Priorities on Website
- II. DSIR Division Priorities on Webpage
- III. Funding Opportunity Announcements (FOAs)
- IV. Scientific Meetings/Workshop Reports (webpage)
- V. NAMHC Workgroup Reports (webpage)



I. Institute Priorities on the NIMH Website

- Vision Statement
- Mission Statement
- Strategic Plan (Four Main Objectives)

www.nimh.nih.gov



NIMH Vision

NIMH envisions a world in which mental illnesses are prevented and cured.

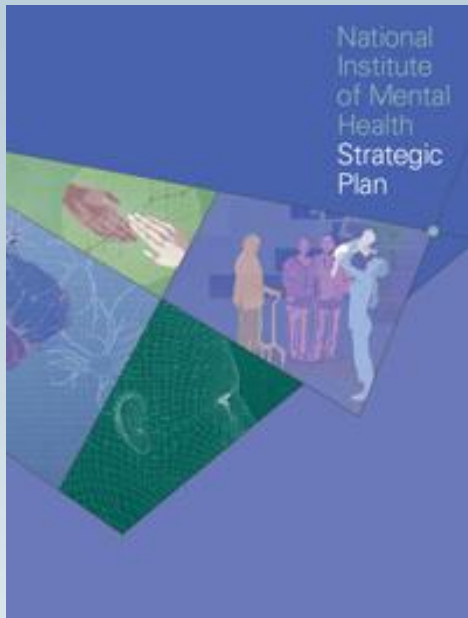


NIMH Mission

To transform the understanding and treatment of mental illnesses through basic and clinical research, paving the way for recovery, prevention, and cure.



NIMH Strategic Plan Objectives



- **Strategic Objective 1:** Promote discovery in the brain and behavioral sciences to fuel research on the causes of mental disorders
- **Strategic Objective 2:** Chart mental illness trajectories to determine when, where, and how to intervene
- **Strategic Objective 3:** Develop new and better interventions for mental disorders that incorporate the diverse needs and circumstances of people with mental illness
- **Strategic Objective 4:** Strengthen the public health impact of NIMH-supported research



II. DSIR Research Priorities

- Develop innovative interventions (treatments, prevention strategies, service delivery approaches) and personalize them for optimal use in diverse populations.
- Test interventions through effectiveness research and practical clinical trials, to ensure that they are safe, maximize recovery and functioning, cost-effective, and personalized (e.g., by determining optimal lengths, combinations, and sequences of interventions, and subgroups of responders/non-responders).
- Reduce burden and mortality associated with suicidality through research on early detection, assessment, interventions, and services for at risk populations.

<http://www.nimh.nih.gov/dsir/dsir.cfm>



II. DSIR Research Priorities, cont.

- Identify effective dissemination and implementation processes to increase the uptake of scientifically informed treatments and services.
- Employ strategic partnerships and community engagement/ participation to enhance research capacity and infrastructure.
- Identify new targets for innovative intervention and service delivery models through research that examines the burdens from mental illness as well as the current use, benefits, safety, costs, and unmet needs for mental health care.

<http://www.nimh.nih.gov/dsir/dsir.cfm>



III. Funding Opportunity Announcements – Selected Examples

- PA-07-158: Early Identification and Treatment of Mental Disorders in Children and Adolescents
- PA-07-091: Effectiveness, Practice, And Implementation In Comprehensive Community Mental Health Services (CMHS) Program for Children and their Families Service Sites
- PA-07-079: Research On The Reduction And Prevention Of Suicidality

- RFA-MH-09-010: Innovative Approaches to Personalizing the Treatment of Depression (R01) [Expired]
- RFA-MH-09160: Novel Interventions for Neurodevelopmental Disorders (R34)



IV. Scientific Meeting & Workshop Reports – Selected Examples

- Research Roundtable: Heterogeneity in Child and Adolescent Depression (2008)
 - Child Adolescent Effectiveness Research in Clinical Practice and Community Settings (2008)
 - Improving Long-term Efficacy & Effectiveness Outcomes in ADHD: A Treatment Development Workshop (2007)

 - 2nd Annual Conference on the Science of Dissemination & Implementation: Building Research Capacity to Bridge the Gap from Science to Service (2009)
- NCDEU: New Research Approaches for MH Interventions: Translating MH Research into Practice: Accelerating the Pace: June 29, 2009 – July 2, 2009
- Mental Health Services Research (MHSR) 2009: Improving the Efficiency of Research and Mental Health Services Delivery: July 20, 2009 – July 21, 2009



V. NAMHC Workgroup Reports – Selected Examples

- Transformative Neurodevelopmental Research in Mental Illness (2008)
- The Road Ahead: Research Partnerships to Transform Services (2006)
- Treatment Research in Mental Illness (2005)
- Blueprint for Change: Research on Child & Adolescent Mental Health (2001)
- Bridging Science and Service (1999)



Contact NIMH Program Staff about Current Priorities

Benedetto Vitiello, MD, Chief (bvitiell@mail.nih.gov)

Pharmacological, Combined Interventions

Joel Sherrill, PhD (jsherril@mail.nih.gov)

Psychosocial Interventions

Amy Goldstein, PhD (goldsteinam@mail.nih.gov)

Preventive Interventions

Lauren Hill, PhD (hilla@mail.nih.gov)

Research Training



Selected Funding Mechanisms



Selecting the Right Mechanism

- Read Announcements on the web
- Get advice from colleagues /mentors
- Speak with NIMH Project Officers – Early in the process!



What is Right for You?

- Where you are in your career
 - pre-doc, post-doc, new faculty member
- Type of research interest
 - services, clinical, translational
- Types of resources you need
 - \$, time, training, etc.
- Match qualifications/eligibility



Selected Mechanisms

- Where you are in your career
 - pre-doc, post-doc, new faculty member
- Type of research interest
 - services, clinical, translational
- Types of resources you need
 - \$, time, training, etc.
- Match qualifications/eligibility



Mentored Career Development Awards

Intended for those who:

- Are in initial phase of research career
- Require supervised career development beyond post-doc
- Have a goal of becoming an independent scientific investigator



Types of Mentored Ks

- K01 Mentored Research Scientist Development Award
- K23 Mentored Patient-Oriented Research Development Award
- K25 Mentored Qualitative Research Career Development
- K99 NIH Pathway to Independence



What are the Requirements?

For K01, K23, K25:

- Duration: 3-5 years
- Minimum Research Effort: 75%
- Renewability: None
- Support: Salary + Research
 - (Up to \$90K + Up to \$50K- NIMH)



K99 Awards

- Two distinct Phases (K99 & R00)
 - Mentored Phase (up to 2 yrs)
 - Independent Investigator Phase (up to 3 yrs)
- Salary & research costs differ during Phase I
- Phase II requires full-time tenure track position
- Advancement to Phase II is not automatic



Research Project Awards

- Standard Research Project Awards (R01)
- Exploratory Research Grants (R34)
- Small Grants (R03)



Regular Research Awards

Features:

- Duration: Up to 5 years
- Res. Costs: Not limited
- Renewable: Yes
- Pages: 25 pages



Exploratory Research Grants (R34)

- Develop/pilot test new/adapted interventions, pilot test interventions for effectiveness, or conduct prelim./developmental services research.
 - GOAL: Establish feasibility for purposes of pursuing a larger, definitive (R01) study.
- Features:
- Duration: Up to 3 years
 - Res. Costs: \$450,000 for up to 3 years (no 1 year exceeding \$225,000)
 - Renewable: No
 - Pages: 25 pages



NIMH Small Grants Program (R03)

Features:

- Duration: 2 years
- Res. Costs: Up to \$50,000/year
- Renewable: No
- Pages: 10 pages



Supplements to Promote Diversity & Promote Reentry into Science

- Supplements to eligible research grants
- Like a “mini K” award
- Guidelines on the NIMH web-site
- Apply early in the fiscal year!



Audience Questions (1)

- What percentage of salary do R grants typically cover?



Audience Questions (2)

- Are you ineligible to work on other mechanisms or supplements at the same time you are working on a K award project?



Audience Questions (3)

- How do you balance faculty responsibilities, a K award, and preparation for tenure?



Dissemination and networking
services brought to you by



interlinkTM
training dissemination services

interlink*your* **training**.com